

Oregon Department of Transportation

Group Map 1

Over-Dimension Permit Unit
See reverse side
Revised January 2018

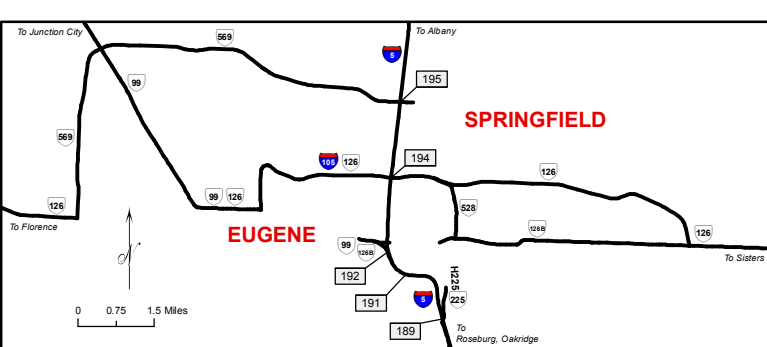
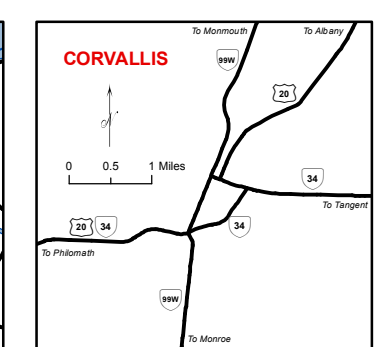
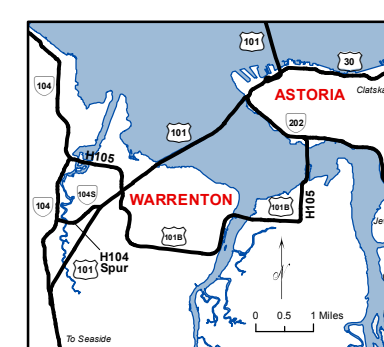
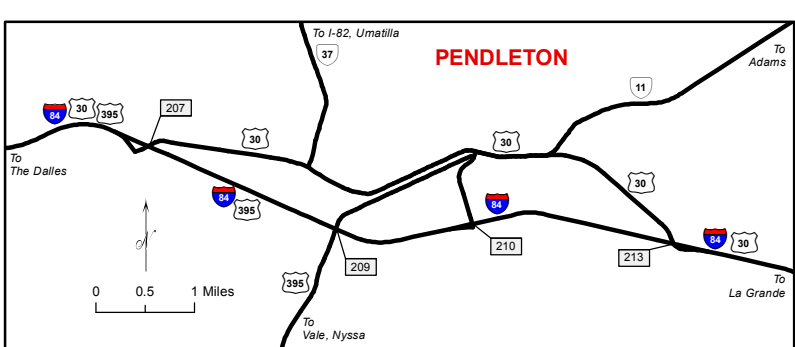
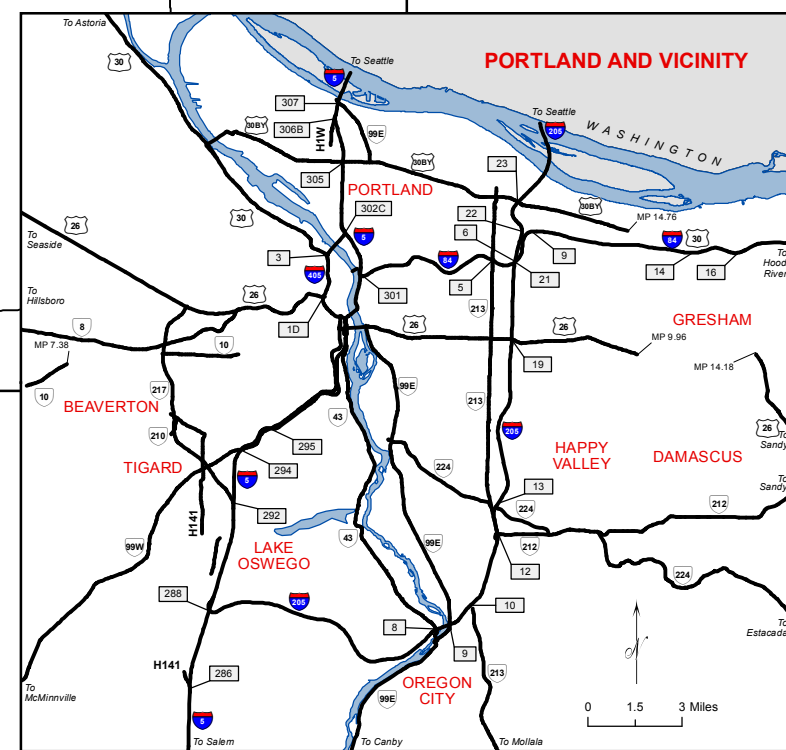
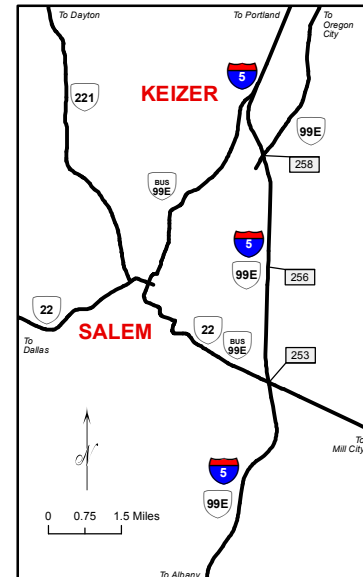
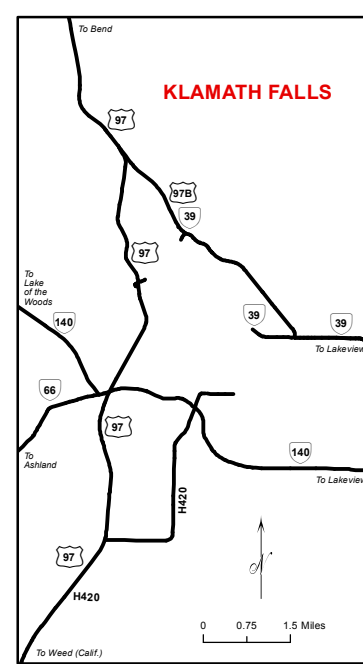
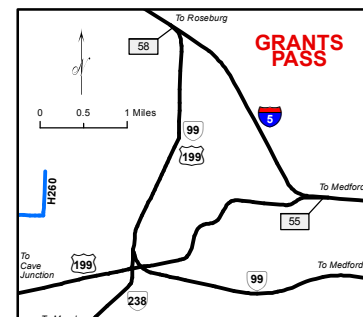
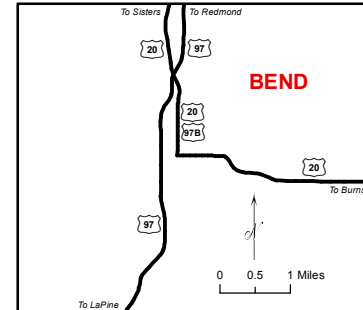
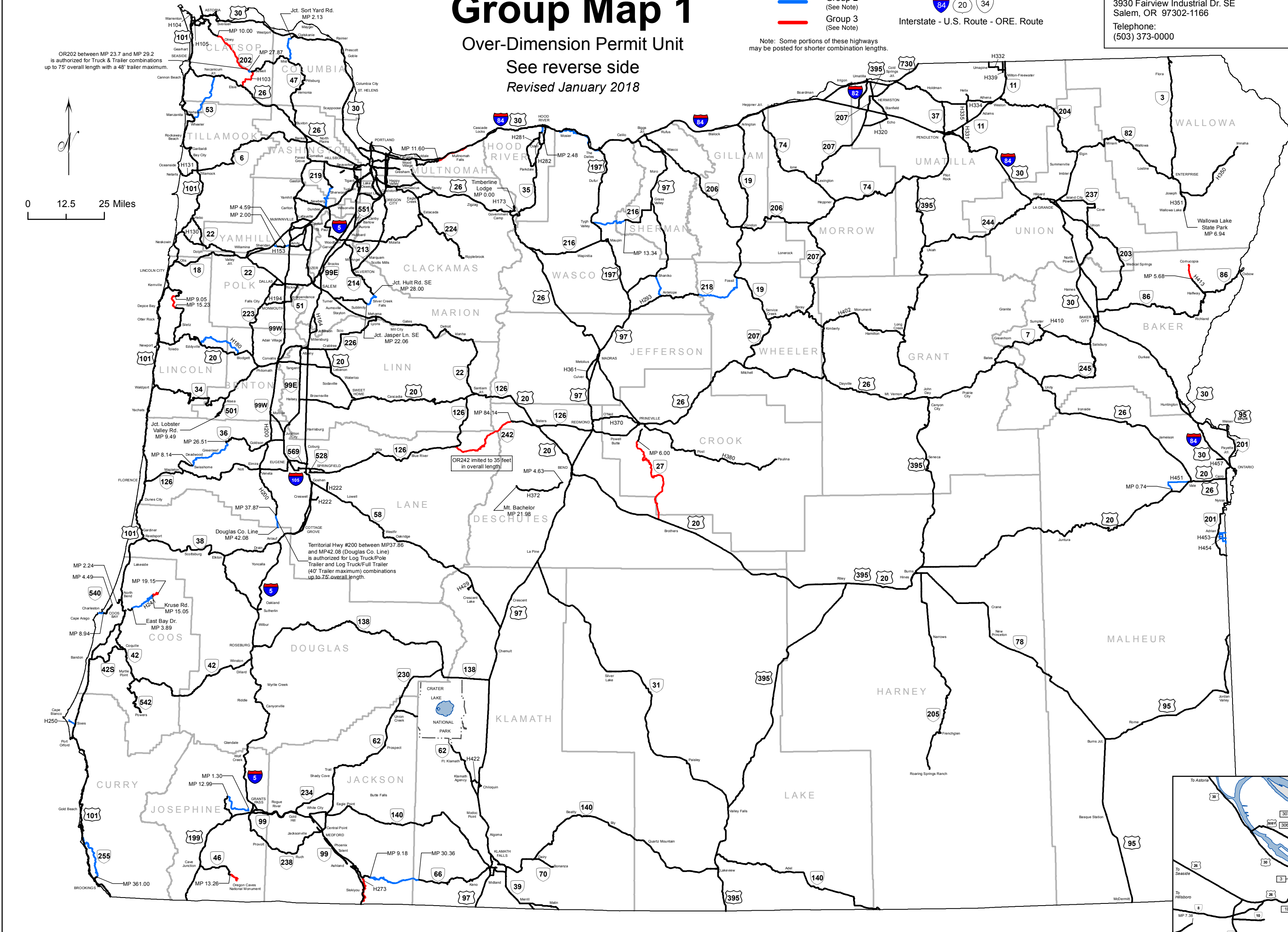
- Group 1
- Group 2
- Group 3

Note: Some portions of these highways may be posted for shorter combination lengths.

Interstate - U.S. Route - ORE. Route

For additional information, contact or mail request to:
 Over-Dimension Permit Unit
 Motor Carrier Transportation Division
 3930 Fairview Industrial Dr. SE
 Salem, OR 97302-1166
 Telephone:
 (503) 373-0000

This map identifies Group 1, 2, and 3 highways and indicates general Legal Length limits for various Legal Size vehicles and combinations hauling Legal Size Loads. No Permit Required. May also be used to determine pilots for over width on Group 2 and Group 3 highways per charts on attachments 70A, 75A or 82A (By permit).



Group Map 1

Group Map 1

MAXIMUM ALLOWABLE LENGTHS EXCEPT WHEN OPERATING UNDER AUTHORITY OF SPECIAL PERMIT. Table with columns for TYPE OF VEHICLE OR COMBINATION, HIGHWAY CLASSIFICATION (GROUP 1, 2, 3), and overall length restrictions.

Group Map 1 * See Route Map 7 for Designated Routes and Restrictions on Overall Lengths.

The following Exemptions apply to the table of weights shown below.

Exemption 1: Two consecutive sets of tandem axles may have a loaded weight of 34,000 pounds each when operating on interstate highways with a permit...

Exemption 2: A group of four axles consisting of a set of tandem axles and two axles spaced nine feet or more apart may have a loaded weight of more than 65,500 pounds...

Exemption 3: An additional 550 pounds above the weights shown below is allowed for fully functional idle reduction systems.

Table with columns: Exemption 1, Minimum Axle Spacing Required, Interstate Highways, Non-Interstate Highways. Includes diagrams of axle configurations.

Table with columns: Exemption 2, Minimum Axle Spacing Required, Interstate Highways, Non-Interstate Highways. Includes diagram of a 4-axle configuration.

* Minimum axle spacing is the distance between the first and last axle of any group shown above.

Exemption 4: An additional 2000 pounds above the weights shown below is allowed for a vehicle that uses natural gas as the fuel source.

Permit Weight Table 1. Table with columns: Wheelbase in feet, 2 Axles, 3 Axles, 4 Axles, 5 Axles, 6 Axles, 7 or more.

Permit Weight Table 2 - Extended Weight. Table with columns: Wheelbase in feet, 5 Axles, 6 Axles, 7 Axles, 8 or more.

The loaded weight of any group of axles, vehicle or combination of vehicles shall not exceed that specified in Permit Weight Table 1 or any of the following:

See Permit Weight Table 1 if using less than 5 axles or 47 feet wheelbase.

* Distance measured to the nearest foot; when exactly 1/2 foot or more, round up to the next larger number

- MAXIMUM PERMISSIBLE WEIGHTS OAR 734-074-0020. (1) The maximum allowable weights for single axles and tandem axles shall not exceed those specified under ORS 818.010(1) and 818.010(2).

LEGAL HEIGHT IS 14' 00" - LOADS EXCEEDING THIS HEIGHT MUST BE MOVED UNDER SPECIAL PERMIT. Table with columns: WIDTH, WHEEL BASE, OVERHANG.

- (1) Legal load length is 40 feet. A load length 40 feet or less may extend forward of the rear of the cab ORS 818.080(1).
- (2) A load length over 40 feet is allowed providing the load does not extend beyond the rear of the semitrailer by more than 5 feet or extend forward of the rear of the cab ORS 818.100(10a,b).

Group Map 1

Group Map 1